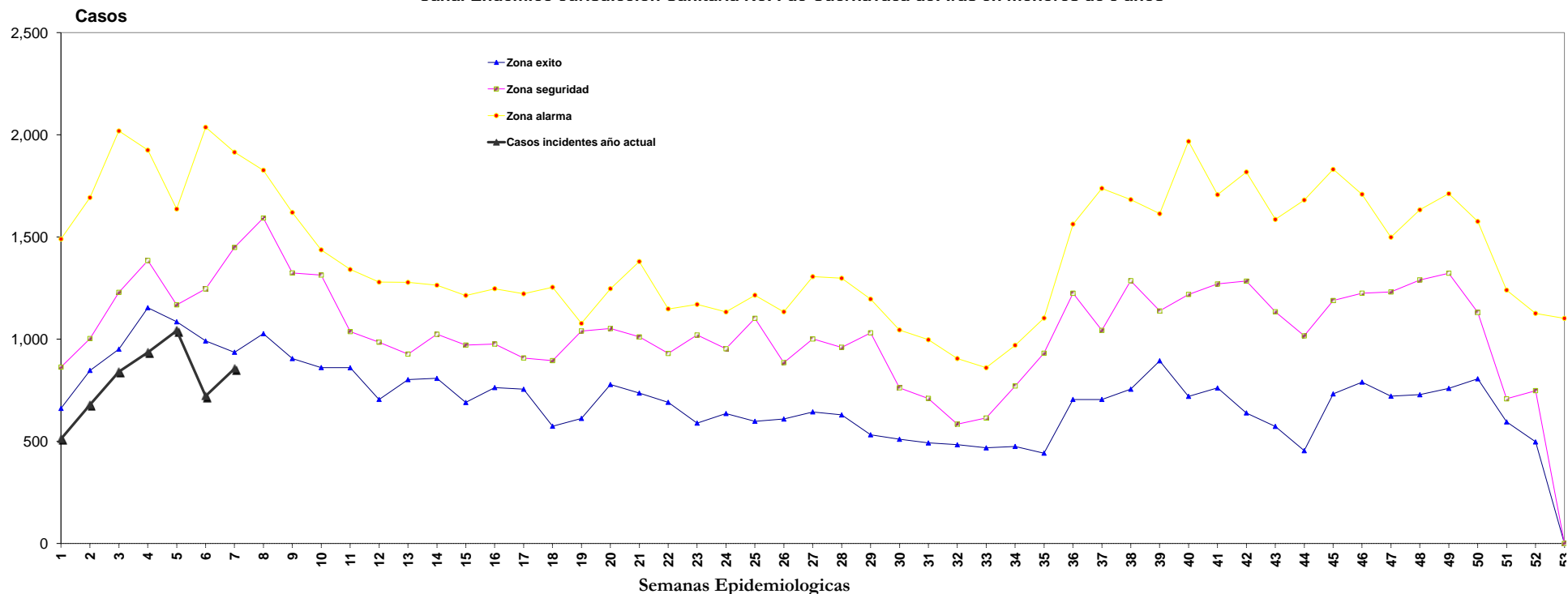


CANAL ENDEMICO JURISDICCION SANITARIA No. I DE CUERNAVACA DE: IRAS EN MENORES DE 5 AÑOS 2020

SEMANAS EPIDEMIOLÓGICAS																																																						
GRÁFICO ENDEMICOS CORRESPONDIENTES A LA SEMANA 52 DE LA SEMANA DE LAS ENFERMEDADES EN MENORES DE CINCO AÑOS																																																						
Semanas Epidemiológicas																																																						
AÑOS	1	2	3	4	5	6	7	8	9	10	11	12	13	14	15	16	17	18	19	20	21	22	23	24	25	26	27	28	29	30	31	32	33	34	35	36	37	38	39	40	41	42	43	44	45	46	47	48	49	50	51	52	53	
2013	863	1,154	1,364	1,449	1,294	1,246	1,449	1,593	1,324	1,392	1,203	985	805	1,059	971	1,084	1,222	1,015	1,055	1,119	1,028	930	1,035	1,114	1,164	1,134	1,274	1,017	1,092	961	997	905	860	970	1,103	1,362	1,738	1,683	1,614	1,968	1,690	1,581	1,366	1,238	1,283	1,310	1,248	1,386	1,328	1,266	1,191	989	0	
2014	957	1,171	1,245	1,558	1,399	1,418	1,531	1,705	1,456	1,408	1,341	1,212	1,278	1,264	1,214	976	1,197	895	1,040	1,247	1,380	1,148	1,170	1,133	1,215	863	1,001	1,177	1,092	1,045	893	813	748	803	1,092	1,218	1,357	1,305	1,479	1,566	1,707	1,818	1,586	1,681	1,831	1,709	1,410	1,633	1,712	1,576	1,240	1,032	1,102	
2015	1,490	1,693	2,019	1,925	1,637	2,037	1,915	1,765	1,620	1,437	1,306	1,279	890	1,237	1,053	1,054	908	997	1,048	1,139	1,052	1,043	1,101	983	1,107	1,129	1,306	1,298	1,196	1,036	894	851	822	771	962	1,288	1,043	1,299	1,173	1,513	1,558	1,589	1,220	1,218	1,320	1,282	1,231	1,290	1,385	1,131	843	748	0	
2016	944	847	1,165	1,385	1,168	1,370	1,776	1,827	1,575	1,314	1,037	705	990	1,004	1,038	1,247	1,033	1,254	1,077	1,052	1,011	969	1,020	911	1,102	1,016	1,193	960	1,031	657	710	583	614	592	823	1,225	977	1,286	1,138	1,219	1,270	1,284	1,134	1,016	1,189	1,225	1,499	1,295	1,323	1,440	708	1,126	0	
2017	771	1,003	951	1,304	1,087	1,033	1,011	1,105	1,091	1,137	1,012	1,064	1,025	1,024	690	939	778	767	743	924	886	784	851	953	1,004	885	879	736	736	762	492	584	532	779	931	1,563	1,296	974	934	720	761	639	573	454	732	915	877	1,031	759	806	595	677	0	
2018	691	958	1,229	1,154	1,085	991	1,087	1,027	905	940	995	801	802	808	732	832	829	626	718	836	894	786	707	644	710	764	845	850	866	655	497	551	475	586	642	768	789	865	916	954	929	801	921	677	900	790	895	781	850	829	703	565	0	
2019	661	924	1,155	1,175	1,109	1,027	936	1,068	974	861	860	845	927	870	853	763	755	574	612	778	736	691	589	636	598	609	644	629	532	510	563	483	468	475	442	705	705	755	894	906	1,031	844	985	740	917	909	721	728	818	817	656	497	0	
TOTAL	6,377	7,750	9,128	9,950	8,779	9,122	9,705	10,090	8,945	8,489	7,754	6,891	6,717	7,266	6,551	6,895	6,722	6,128	6,293	7,095	6,987	6,351	6,473	6,374	6,900	6,400	7,142	6,667	6,545	5,626	5,046	4,770	4,519	4,976	5,995	8,129	7,905	8,167	8,148	8,846	8,946	8,556	7,785	7,024	8,172	8,140	7,881	8,144	8,175	7,865	5,936	5,634	1,102	
Q1	661	847	951	1,154	1,085	991	936	1,027	905	861	860	705	802	808	690	763	755	574	612	778	736	691	589	636	598	609	644	629	532	510	492	483	468	475	442	705	705	755	894	906	761	639	573	454	732	790	721	728	759	806	595	497	0	
Ma	863	1,003	1,229	1,385	1,168	1,246	1,449	1,593	1,324	1,314	1,037	985	927	1,024	971	976	908	895	1,040	1,052	1,011	930	1,020	953	1,102	885	1,001	960	1,031	762	710	584	614	771	931	1,225	1,043	1,286	1,138	1,219	1,270	1,284	1,134	1,016	1,189	1,225	1,231	1,290	1,323	1,131	708	748	0	
Q3	1,490	1,693	2,019	1,925	1,637	2,037	1,915	1,827	1,620	1,437	1,341	1,279	1,278	1,264	1,214	1,247	1,222	1,254	1,077	1,247	1,380	1,148	1,170	1,133	1,215	1,134	1,306	1,298	1,196	1,045	997	905	860	970	1,103	1,563	1,738	1,683	1,614	1,968	1,707	1,818	1,586	1,681	1,831	1,709	1,499	1,633	1,712	1,576	1,240	1,126	1,102	
2020	512	678	841	935	1,042	721	855																																															

Canal Endémico Jurisdicción Sanitaria No. I de Cuernavaca de: Iras en menores de 5 años



TOTAL
63,471
68,047
65,131
57,354
45,559
42,451
39,960
381,073
39,960
57,354
68,047
5,584